

# THE BENEFITS OF EXPANDING MEDICAID FOR RUTHERFORD COUNTY

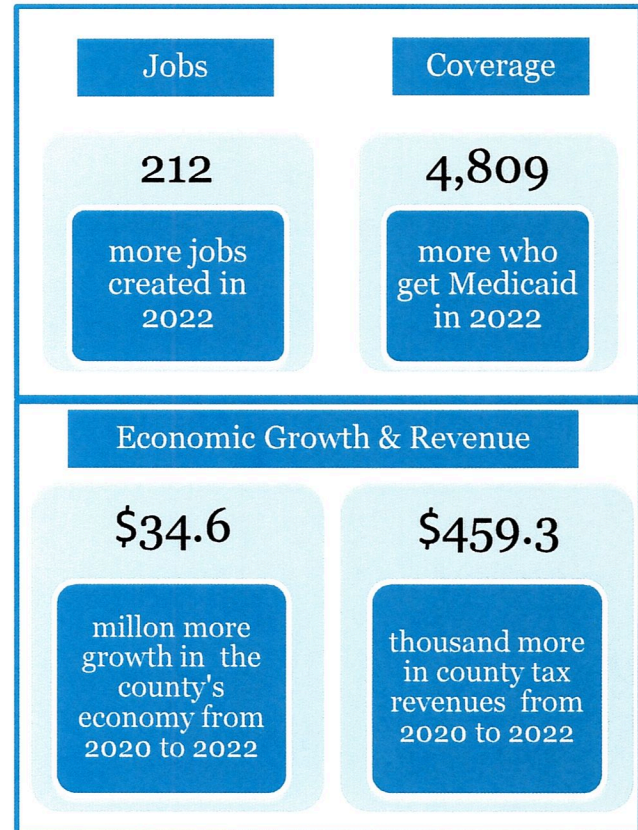
North Carolina has the opportunity to join most other states by expanding Medicaid eligibility for low-income residents. Current income limits for Medicaid eligibility in North Carolina rank below all but eight states.

New analyses by the Center for Health Policy Research at George Washington University indicate that expanding Medicaid this year will lead to greater economic activity and employment because billions of additional federal dollars will flow in to support the costs of insurance expansions.

If North Carolina expands Medicaid, the state would receive \$11.7 billion more in federal funding from 2020 to 2022. By 2022, over 600,000 additional North Carolinians will have Medicaid coverage.

Medicaid expansion would be an engine for economic growth that creates over 37,000 more jobs by 2022. It would also increase state and county tax revenues by over \$600 million from 2020 to 2022.

In **Rutherford County**, expanding Medicaid would lead to:



About half the jobs created would be in health care (such as hospitals or clinics), while almost half would be in other sectors, such as construction or retail and wholesale trade. This ripple effect occurs because Medicaid funding received by hospitals, clinics or drug stores is used to pay workers' salaries and to buy other goods and services. The economic benefits multiply as these funds are, in turn, used to pay for mortgages or rent, buy food and pay state and county taxes.

Expansion of Medicaid will not only help more people get access to affordable health care, it can serve promote economic development and job creation across the state.

**For more information, see "The Economic and Employment Benefits of Expanding Medicaid in North Carolina: A 2019 Update" at [www.NCMedicaidExpansion.com](http://www.NCMedicaidExpansion.com).**

## *MEDICAID EXPANSION AND POTENTIAL IMPACT ON RUTHERFORD COUNTY*

Current Data		Potential Growth with Expansion 2022		
# Med Recipients	16,013	# Med Recipients	Additional 4,809 (30% increase)	20,822 Total Projected Recipients
# MAGI Recipients	10,193	# MAGI Recipients	Additional 4,809 (30% increase)	15,002 Total Projected Magi Recipients
# MAGI Cases	7,655	# MAGI Cases	3,607 Estimated 47% increase	11,262
# Staff	3 Supervisors	#Staff	Using 47% increase	1-2 Supervisors
	2 Lead Workers			1 Lead Worker
	16 Caseworkers			7-8 Caseworkers
	1 Temp Worker			1 Temp Worker

### *Considerations*

- Medicaid Caseworkers are reimbursed at 75% so county would have to pick up 25%.
- Desks/Computers, Phones, software Licenses would be needed.
- Space: Currently we only have one vacant office. In our current building we would have to take up multiple conference rooms to add cubicles and double up staff in offices.
- Additional postage due to more recipients.