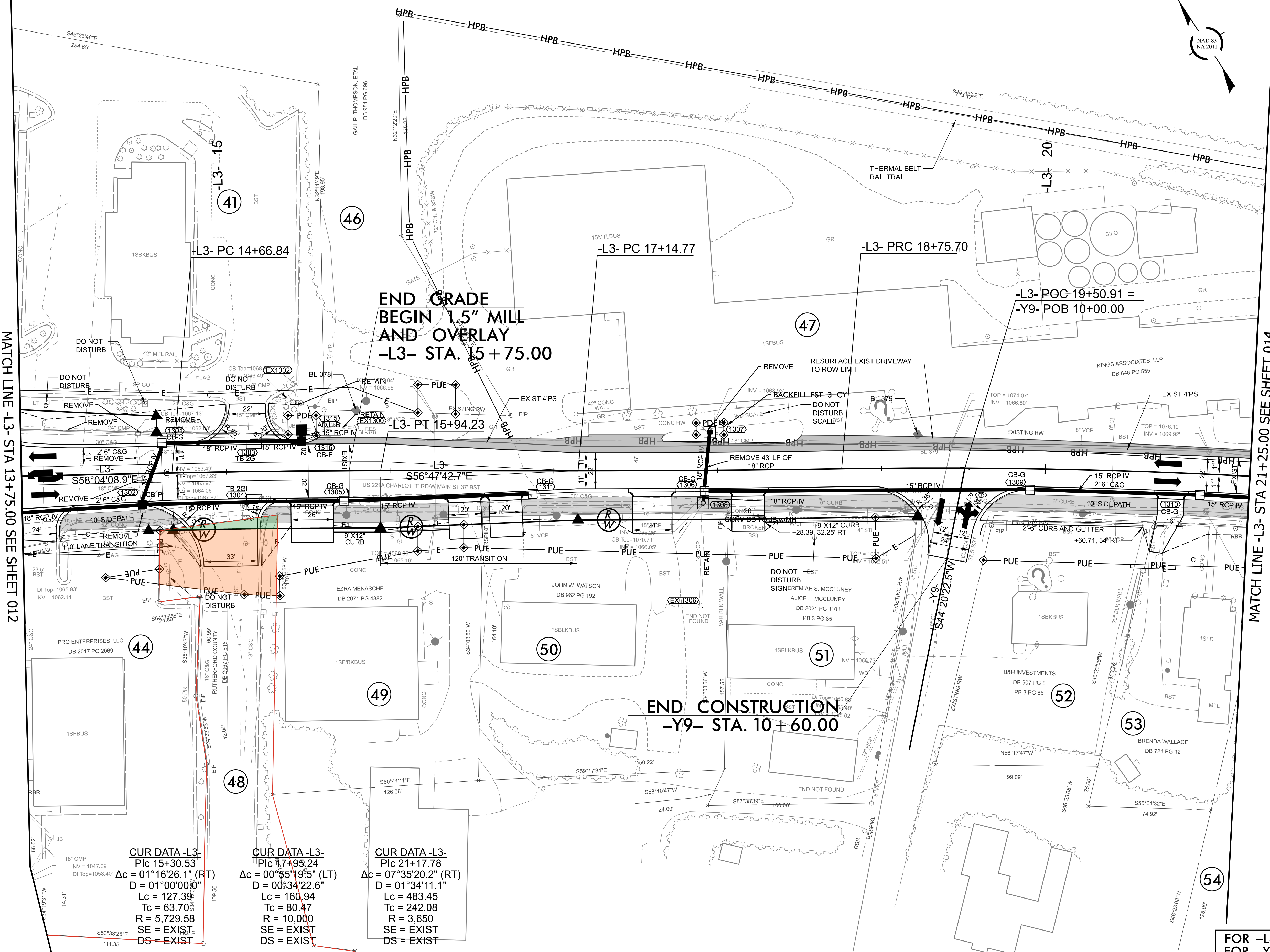


REVISIONS
2026-01-09: DO NOT DISTURB NOTE ADDED TO SCALE ON PARCEL 47. DO NOT DISTURB NOTES ADDED TO LIGHT POLES ON PARCEL 41.
RESURFACING OF EXISTING ASPHALT DRIVEWAYS EXTENDED TO RIGHT-OF-WAY LIMITS ON PARCELS 46 AND 47.
2026-01-21: PUE REVISED ON PARCELS 46, 49, 50, 51, 52, AND 53. TCE REVISED ON PARCELS 49, 51, 52, AND 53. PUE ADDED ON PARCEL 44.
TCE REMOVED PARCEL 48. W&S



**END GRADE
BEGIN 1.5" MILL
AND OVERLAY
-L3- STA. 15+75.00**

**END CONSTRUCTION
-Y9- STA. 10+60.00**

**CUR DATA -L3-
P/c 15+30.53**
Δc = 01°16'26.1" (RT)
D = 01°00'00.0"
Lc = 127.39
Tc = 63.70
R = 5,729.58
SE = EXIST
DS = EXIST

**CUR DATA -L3-
P/c 17+95.24**
Δc = 00°55'19.5" (LT)
D = 00°34'22.6"
Lc = 160.94
Tc = 80.47
R = 10,000
SE = EXIST
DS = EXIST

**CUR DATA -L3-
P/c 21+17.78**
Δc = 07°35'20.2" (RT)
D = 01°34'11.1"
Lc = 483.45
Tc = 242.08
R = 3,650
SE = EXIST
DS = EXIST

MATCH LINE -L3- STA 13+75.00 SEE SHEET 012

MATCH LINE -L3- STA 21+25.00 SEE SHEET 014

**FOR -L3- PROFILE, SEE SHEET 27
FOR -Y9- PROFILE, SEE SHEET 32
FOR RIGHT-OF-WAY STATIONS
AND OFFSETS, SEE SHEET 2B-9**